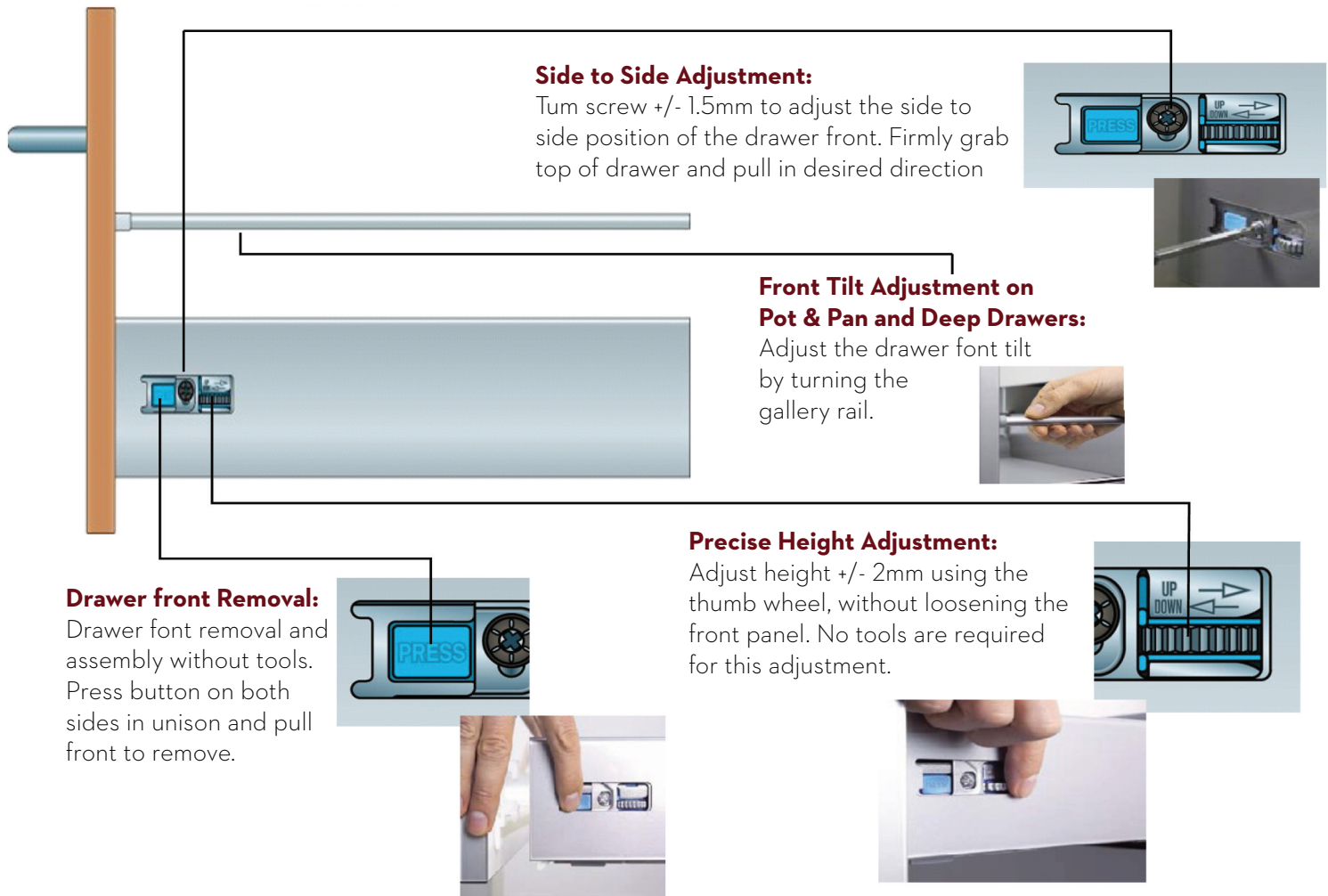


## Drawer Adjustment Instructions

With extended use of your cabinetry, adjustments may sometimes be required. Hawthorne Kitchens drawers are simple to adjust.



### Drawer installation and removal:

The drawer is fitted simply by pulling out drawer runners, positioning drawer on the runners and pushing it into place. It is automatically connected to the runner by two catches. You will hear a click when it has engaged. Removal is just as easy. The catches on the bottom of the drawer box are pressed while pulling the drawer forward.

