

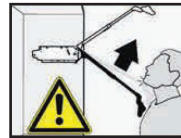
FAQ – Resources

Lift-Up Adjustment Instructions

Any adjustment of the Aventos Hardware must be done with the recommended bit. Using any other bit will nullify any hardware warranty.

The bit needed for adjustment will be included with every AVENTOS cabinet.

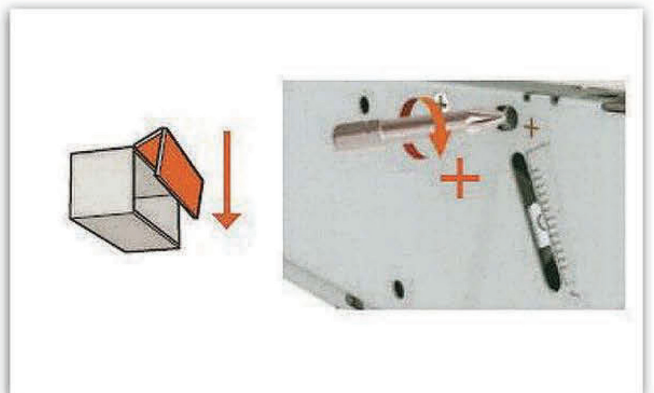
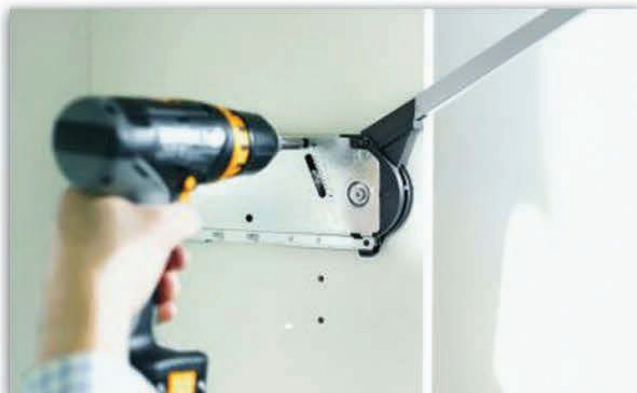
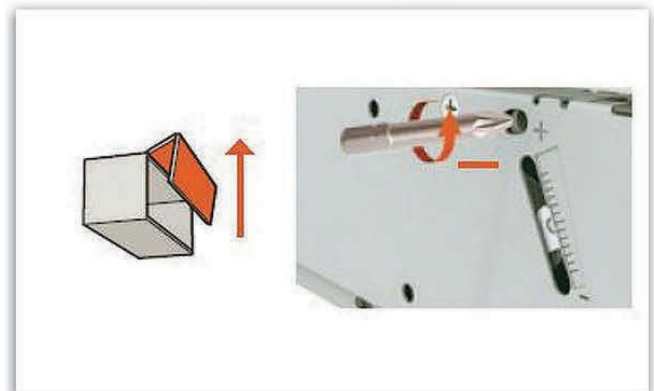
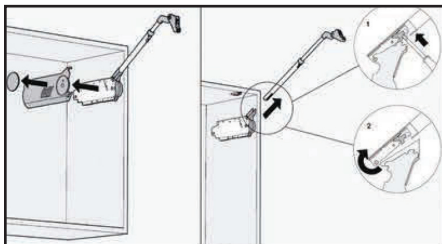
Warning



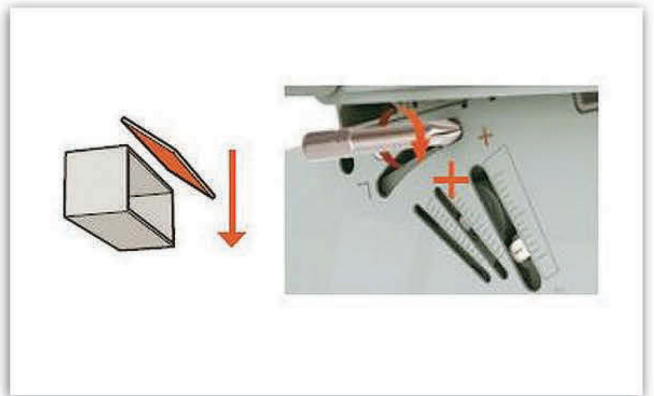
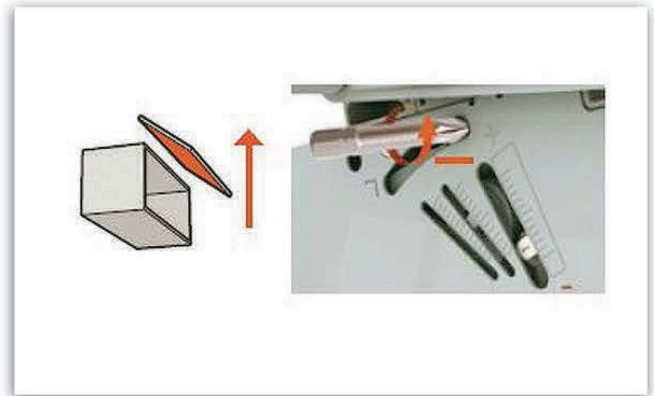
Risk of severe injury by spring-loaded arm. DO NOT push arm down when door is not attached.



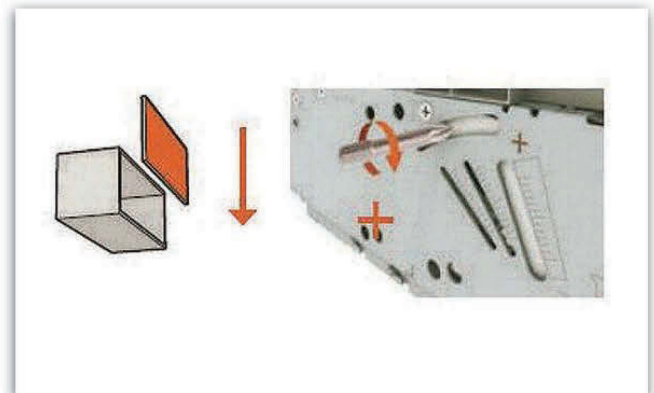
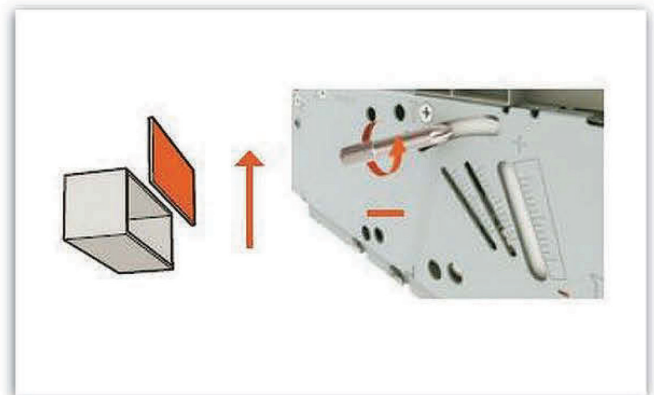
When installing or removing, ensure arm is left in the "UP" position. It is recommended that arms are removed during cabinet installation.



HS

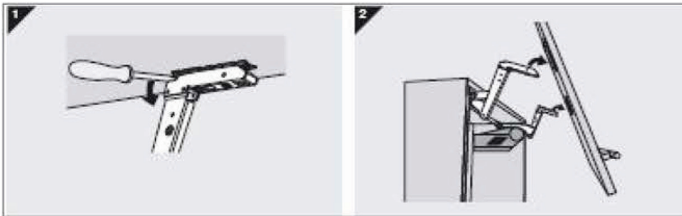


HL

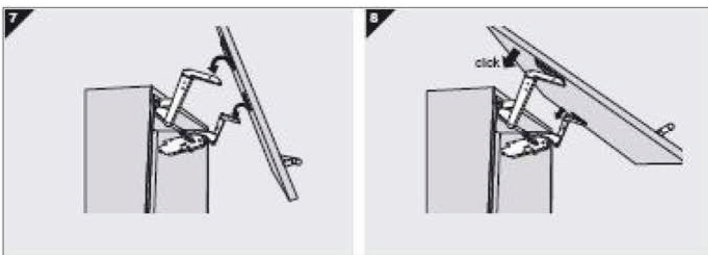


Wall 1 Door 1 Door Up & Over Cabinet Aventos HS

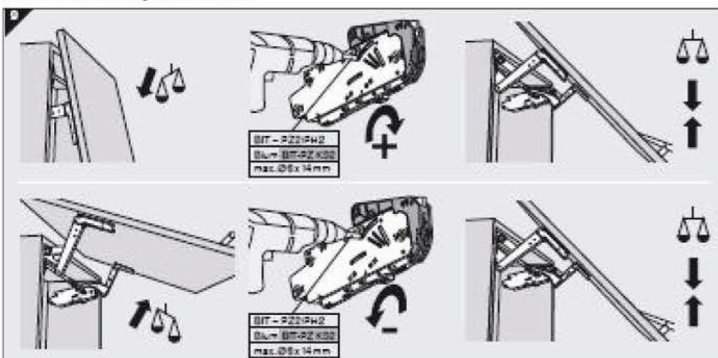
Door Removal



Door Attachment

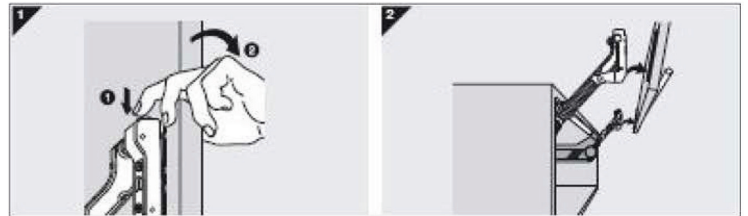


Tension Adjustment

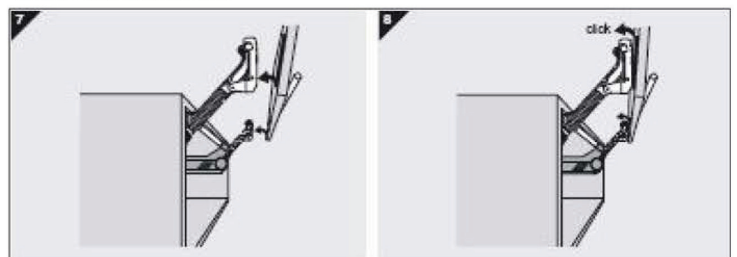


Wall 1 Door 1 Door Up Vertical Cabinet Aventos HL

Door Removal



Door Attachment



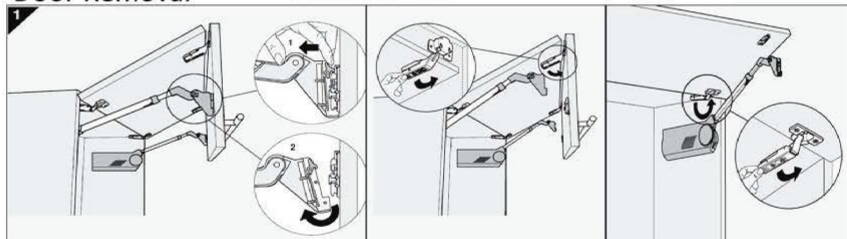
Tension Adjustment



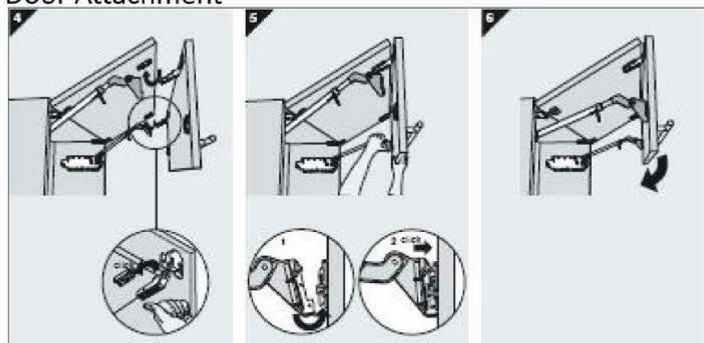
Wall 2 Door 1 Horizontal Bi-Fold Cabinet Aventos HF



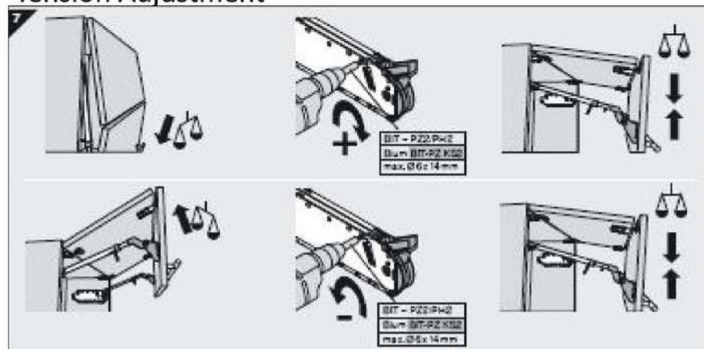
Door Removal



Door Attachment



Tension Adjustment



Opening angle stop for 104°: **20F7051**

- For less required space above the cabinet.

Opening angle stop for 83°: **20F7011**

- No required space above the cabinet.



Fix lift mechanism with an additional screw 4 x 35 mm!

