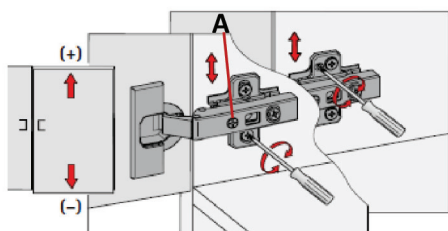


Hinge Adjustment Instructions

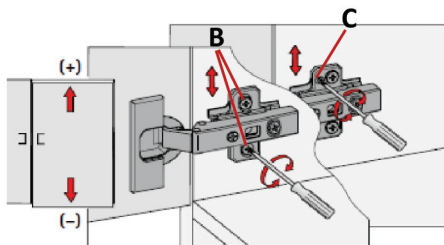
With extended use of your cabinetry, adjustments may sometimes be required. Hawthorne Kitchens hinges are simple to adjust.

HINGE ADJUSTMENTS



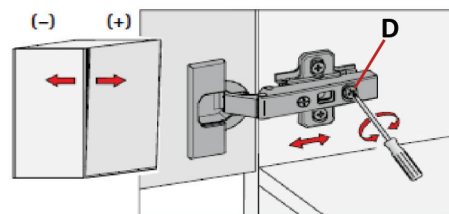
Sideways Adjustments:

This adjustment system allows the door to be moved sideways without changing the gap behind the door. Screw adjustment screw (A) in or out until the door is hanging straight.



Height Adjustment:

Undo the fixing screws (B) a short distance and adjust height of door. Once in place, retighten fixing screw. Optionally, the adjustment cam (C) on the mounting plate can be used for aligning door height.



Depth Adjustment:

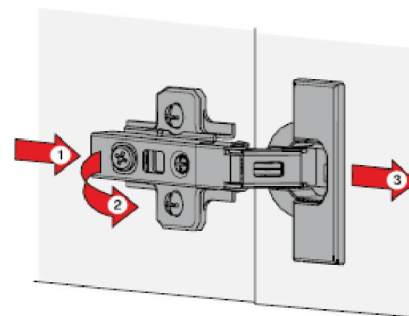
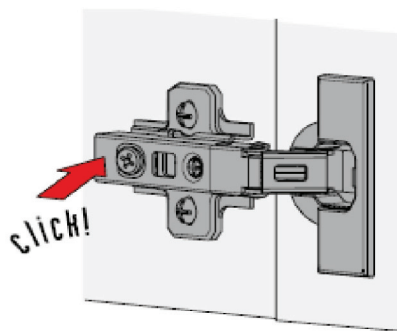
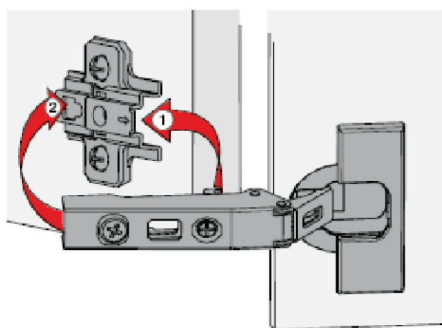
Correct the distance between door and cabinet side by turning the adjustment cam (D). Turn counterclockwise to increase distance. Turn clockwise to decrease distance.

CABINET DOOR MOUNTING AND REMOVAL

To Secure Hinge to Mounting Plate:

Hinge is first threaded into the front of the mounting plate.

Press on end of hinge arm to engage hinge onto mounting plate. You will hear it click into place.



To Remove Hinge from Mounting Plate:

Press gently on the engagement catch concealed beneath the side arm to release as shown.

Pull hinge arm away from hinge plate. Remove door.